

FEATURES 性能

- ◆ 头部45° 倾斜可360° 旋转, 观察舒适, 结构合理。
- ◆ 大视场目镜WF10X
- ◆ 消色差物镜DIN4X,10X,40X(S),100X(S,Oil)
- ◆ 平台尺寸110x120mm/60x30mm
- ◆ 分开式粗微调焦, 粗调手轮松紧可调
- ◆ NA1.25阿贝聚光镜带可变光栏和滤色片
- ◆ 内藏式光源, 卤素灯6V20W, 电源110V/220V/6V20W

- ◆ 45°inclined head 360°rotatable with the reasonable system for easily viewing.
- ◆ Wide field eyepiece WF10X.
- ◆ Achromatic objective DIN4X,10X,40X(S),100X(S,Oil).
- ◆ Stage size,110x120mm/60x30mm.
- ◆ Separate coarse & fine adjustment with tension control.
- ◆ Abbe NA1.25 with Iris diaphragm and filter .
- ◆ Built-in illumination, halogen lamp 110V or 220V/6V20W.



NK - 103A



NK - 103B



NK - 103C



NK - 107



NK - 107CCD



NK - 703

SPECIFICATION LIST 配置表

组件 Components	规格 Specification	NK-103A	NK-103B	NK-103C	NK-107	NK-107CCD	NK-703
观察头 Viewing Head	单目 monocular	●	●				
	双目 Binocular			●	●		
	三目 Trinocular				○	●	●
目镜 Eyepiece	WF10X	●	●	●	●	●	●
	P16X	○	○	○			
	WF10X 带 0.1mm 十字分划板 WF10X / cross scaled 0.1mm	○	○	○	○	○	
	WF8X/18	○	○	○	○	○	
物镜 Objective	EW12.5/15	○	○	○	○	○	
	DIN 消色差物镜 DIN Achromatic Objective	○	○	●	●	●	
	无穷远平场消色差物镜 Infinitive Plan-Field Achromatic objective:4x ∞ /NA0.1、10X ∞ /NA0.25、20X ∞ /NA0.50、40X (S) ∞ /NA0.65、100X (s,oil) ∞ /NA1.25						●
	转换器 Nosepiece	四孔转换器 Quadruple Nosepiece	○	○	●	●	●
	三孔转换器 Triple Nosepiece	●	●	○			
载物台 Stage	简易平台 Plain stage, 120 × 130mm	●	●	○			
	平台带移动尺 Stage with Attachable Stage 120X130mm/ 移动范围 Moving range60mmX30mm	○		●			
	双层活动平台 Double layers moving stage 140X140mm/ 移动范围 Moving range75X50mm				●	●	
焦距调节 Focusing	可拆卸式双层机械移动工作台 Knocked-down type and double layers mechanical stage 185X145mm/ 移动范围 Moving Range75X50mm						●
	同轴粗微调焦机构 Coaxial Coarse & Fine Focus Adjustment System				●	●	●
照明系统 Illumination	粗微调分开式调焦机构 Separate coarse & fine adjustment	●	●	●			
	110V/220V 6V20W 卤素灯, 亮度可调 Halogen lamp 110V or 220V, 6V 20W with brightness adjustable		●	●	●	●	
聚光镜 Condenser	平凹反光镜 Plan-concave Mirror	●					
	90v ~ 240v 6v30w 卤素灯, 亮度可调 Halogen lamp 90v to 240v, 6v 30w with brightness adjustable						●
	NA1.25 带可变光栏和滤色片 Abbe NA1.25 with Iris Diaphragm and Filter		●	●	●	●	
摄像接口 Digital Camera port	单片聚光镜带转盘式光栏 Single Lens with Disc Diaphragm	●					
	摇出式聚光镜 Swing type Condenser:N.A.1.2/0.22						●
	标准 C 型接口 "C" Standard port					●	

注: ● 为标准配置 standard ○ 为选购配置 Optional

SX 系列学生显微镜

SERIES STUDENTS MICROSCOPES

FEATURES 性能

- ◆ 45° 倾斜单目观察，锁定目镜。
- ◆ 目镜10x
- ◆ 物镜4x, 10x和40x
- ◆ SX-A和SX-B带平凹反光镜，SX-AL和SX-BL带照明装置
- ◆ SX-AL和SX-BL的输入电压110V/60Hz或220V/50Hz 20W
- ◆ 每台泡沫包装，放入内纸箱，六台一个外箱，外包装尺寸为：44.5x40x32cm(SX-A/B)；49.5x47x34.5cm(SX-AL/BL)

- ◆ 45°inclined monocular head with locked-in eyepiece.
- ◆ Eyepiece 10x.
- ◆ Objective 4x, 10x, 40x.
- ◆ SX-A, SX-B with plan-concave mirror and SX-AL, SX-BL with illumination.
- ◆ Power supply SX-AL and SX-BL 110V/60Hz or 220V/50Hz 20W.
- ◆ Each set packed in Styrofoam and in an inner box. Six sets in one carton. The outer measurement is 44.5x40x32cm(SX-A/B); 49.5x47x34.5cm(SX-AL/BL).



SX-A



SX-B



SX-A1



SX-B4



SX-BL

OPTIONAL ACCESSORY 可选购附件

- | | |
|--------------------------|--|
| ◆ 目镜WF5x, 10x, 15x, 25x | ◆ Eyepiece: WF5x, 10x, 15x, 25x |
| ◆ 生物切片 | ◆ Biological Slide |
| ◆ 生物解剖工具 | ◆ Biological Dissection set |
| ◆ 变倍目镜: 1.0x ~ 1.4x | ◆ Zoom eyepiece: 1.0x ~ 1.4x |
| ◆ 外接光源: 220V/110V, 6V/6W | ◆ Outer-connected illumination: 220V/110V, 6V/6W |

B400 SX-C 型显微镜

SERIES MICROSCOPES

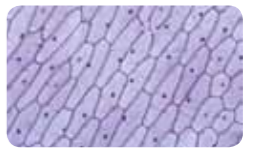
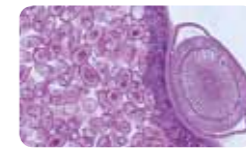
FEATURES 性能

- ◆ 45° 倾斜单目观察，锁定目镜
- ◆ 目镜10x
- ◆ 物镜4x, 10x, 40x
- ◆ 带平凹反光镜，内置照明灯3V3W或LED
- ◆ 电源二节五号电池
- ◆ 塑料机身，携带方便

- ◆ 45°inclined monocular head with locked-in eyepiece.
- ◆ Eyepiece 10x.
- ◆ Objective 4x, 10x, 40x.
- ◆ With plan-concave mirror and built-in illumination 3V/3W or LED.
- ◆ Power 2 units AA batteries.
- ◆ Plastic body easily to carry.



B400



解剖工具 Dissection set



矿石标本 Mineral sample



塑料切片 Plastic slide



玻璃切片 Glass slide